

OMNI FLOOR ANCHORAGE SYSTEMS



L-TRACK / SLIDE 'N CLICK / L-POCKETS
FLOOR ANCHORAGE
SYSTEMS



Q5-6144-FO

Description

L-Track Flange Profile
144" (365cm) in length
(FE753NA144)

Product Associations

OMNI Track (Recessed Profile)



Flange Profile

For flush-mounted installations



Q5-6144-FOPD

Description

L-Track Flange Profile
144" (365cm) in length
Predrilled every 4" (102mm)
(FE753NA144-04-03)

Product Associations

OMNI Track (Recessed Profile)



Flange Profile

For flush-mounted installations



Q5-7551-TFO

Description

End Cap for Flange Profile L-Track
Finish off your flush-mount flange
series installation for a professional
look. (QC06058)

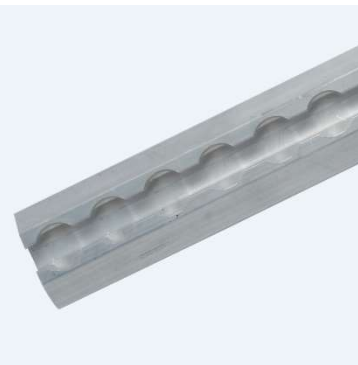
Product Associations

OMNI Track (Recessed Profile)



Flange Profile

For flush-mounted installations



Q5-6144-SRO

Description

L-Track Angled Profile
144" (365cm) in length
(FE752NA144)

Product Associations

OMNI Track (Surface Profile)



Angled Profile

For surface-mounted installations



Q5-6144-SROPD

Description

L-Track Angled Profile
144" (365cm) in length
Predrilled every 4" (102mm)
(FE752NA144-04-3)

Product Associations

OMNI Track (Surface Profile)



Angled Profile

For surface-mounted installations



Q5-7551-SRO

Description

End Cap for Surface Profile L-Track
Finish off your flush-mount flange series installation for a professional look. (QC06059)

Product Associations

OMNI Track (Surface Profile)



Angled Profile

For surface-mounted installations



Q5-7550-T

Description

Press in track cover designed for a smooth bridge across L-Track.
Prevents dirt and waste clogging the L-Track. Easily cut to size.

Product Associations

OMNI Track

Includes:

1x 60" Press-In Track Cover
Extruded 5ft, 152.4cm lengths



FE201163

Description

Flush L-Pocket Anchorage
Recessed mounting

Product Associations

OMNI Anchorage, L-Pocket

Includes:

1x Flush L-Pocket Anchorage
1x Bolt 3.5" (89mm) in length
1x Washer
1x Lock Nut



Q5-7570-A

Description

Covered L-Pocket Anchorage
Recessed mounting

Product Associations

OMNI Anchorage, L-Pocket

Includes:

1x Covered L-Pocket Anchorage
2x Bolts 1.5" (38mm) in length
1x Washer
2x Lock Nuts



Q5-7571-A

Description

Oval L-Pocket Anchorage
Surface mounting

Product Associations

OMNI Anchorage, L-Pocket

Includes:

1x Oval L-Pocket Anchorage
1x Bolt 2.5" (63.5mm) in length
1x Washer
1x Lock Nut



Q8-6500-L

Description

L Fitting with patented Positive Lock Indicator (PLI) that clearly indicates when the fitting is locked in the anchorage.

Product Associations

OMNI Track, L-Pocket



Q8-7580-A

Description

Slide & Click Floor Anchor Assembly

Product Associations

Slide 'N Click, OMNI Anchorage

Includes:

1x Slide & Click Bottom Assembly
1x Bolt 2.5" (63.5mm)
1x Washer & Hex Nut
1x Body Washer (Q5-7530)
1x Blue Plug (Q8-7582-BLUE)



Q8-7583-A

Description

Retrofit Slide & Click Floor Anchor Assembly for replacement of S-Hook Floor anchor seamlessly covers existing installations.

Product Associations

Slide 'N Click Retro fit, OMNI Anchorage

Includes:

1x Slide & Click Bottom Retrofit Assembly
1x Bolt 2.5" (63.5mm)
1x Washer & Hex Nut
1x Body Washer (Q5-7530)
1x Blue Plug (Q8-7582-BLUE)



Q8-7535-A

Description

QSF Seat Fixture Assembly
Easy-reach knobs allow for fast and easy installation and removal of seats on demand, feat. anti-vibration tech.

Product Associations

OMNI Track, Accessories

Includes:

1x Seat Fixture Assembly



G02

Description

G02 Oxygen Holder in single standard configuration. Ergonomical design for ease of use with quick release and visual locking indicator.

Product Associations

OMNI Track, Accessories - Storage

Includes:

1x G02 Oxygen Holder in single standard configuration (FE201122)